

## PerCP Anti-Human CD45 Monoclonal Antibody



天津三箭生物技术股份有限公司  
Tianjin Sungene Biotech Co., Ltd.  
精准 高效 稳定 Precision Efficient Stable

Catalog Number	Vial Size
H20451-32G	25 tests
H20451-32H	100 tests

**Market** | 400-621-0003  
marketing@sungenebiotech.com

**Support** | 022-66211636-8024  
techsupport@sungenebiotech.com

**Web** | www.sungenebiotech.com

**Important Note:** Centrifuge before opening to ensure complete recovery of vial contents.  
This product is guaranteed up to one year from purchase.

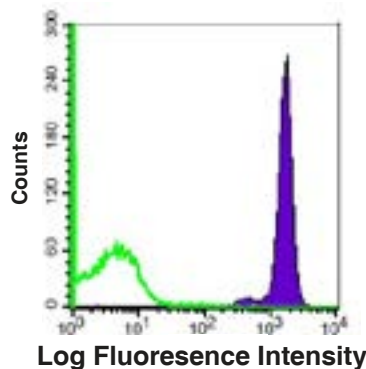
### Purified Antibody Characterization

Clone	Isotype	Reactivity
HI30	Mouse IgG1	Human

### Description

CD45 is a 180-240 kD single chain type I membrane glycoprotein also known as leukocyte common antigen (LCA), B220, and T200. It is a tyrosine phosphatase expressed on the plasma membrane of all hematopoietic cells, except erythrocytes and platelets. CD45 is a signaling molecule that regulates a variety of cellular processes including cell growth, differentiation, cell cycle, and oncogenic transformation. CD45 plays a critical role in T and B cell antigen receptor-mediated activation by dephosphorylating substrates including p56Lck, p59Fyn, and other Src family kinases. CD45 non-covalently associates with lymphocyte phosphatase-associated phosphoprotein (LPAP) on T and B lymphocytes. CD45 has been reported to bind galectin-1 and to be associated with several other cell surface antigens including CD1, CD2, CD3, and CD4.

### Illustration of Immunofluorescent Staining



Staining of normal human peripheral blood lymphocytes with PerCP anti-human CD45 (Clone HI30)

### Product Information

**Conjugation:** PerCP

**Formulation:** PBS pH 7.2, 0.09% NaN<sub>3</sub>, 0.2% BSA

**Storage:** Keep as concentrated solution. Store at 4°C and protected from prolonged exposure to light. **Do not freeze.**

**Application:** Recommended Application: FC

**Usage:** Each lot of this antibody is quality control tested by immunofluorescent staining with flow cytometric analysis (The amount of the reagent is suggested to be used from 20 µL to 5 µL per 100 µL of peripheral blood. Please check your vial). Since applications vary, the appropriate dilutions must be determined for individual use.

### References

- [1] Knapp, W., et al. 1989. Leucocyte Typing IV. Oxford University Press. New York.
- [2] Kishihara, K., et al. 1993. Cell 74:143.
- [3] Esser, M., et al. 2001. J. Virol. 75:6173.
- [4] Yamada, T., et al. 2002. J. Biol. Chem. 277:28830.
- [5] Nagano, M., et al. 2007. Blood 110:151.

**For Research Use Only.**